



Ministry of Education, Culture and
Science



Information Products Early School Leaving

Dennis van Gessel

Early School Leaving
Ministry of Education, Culture and
Science, Netherlands

The Hague, 11 November 2014

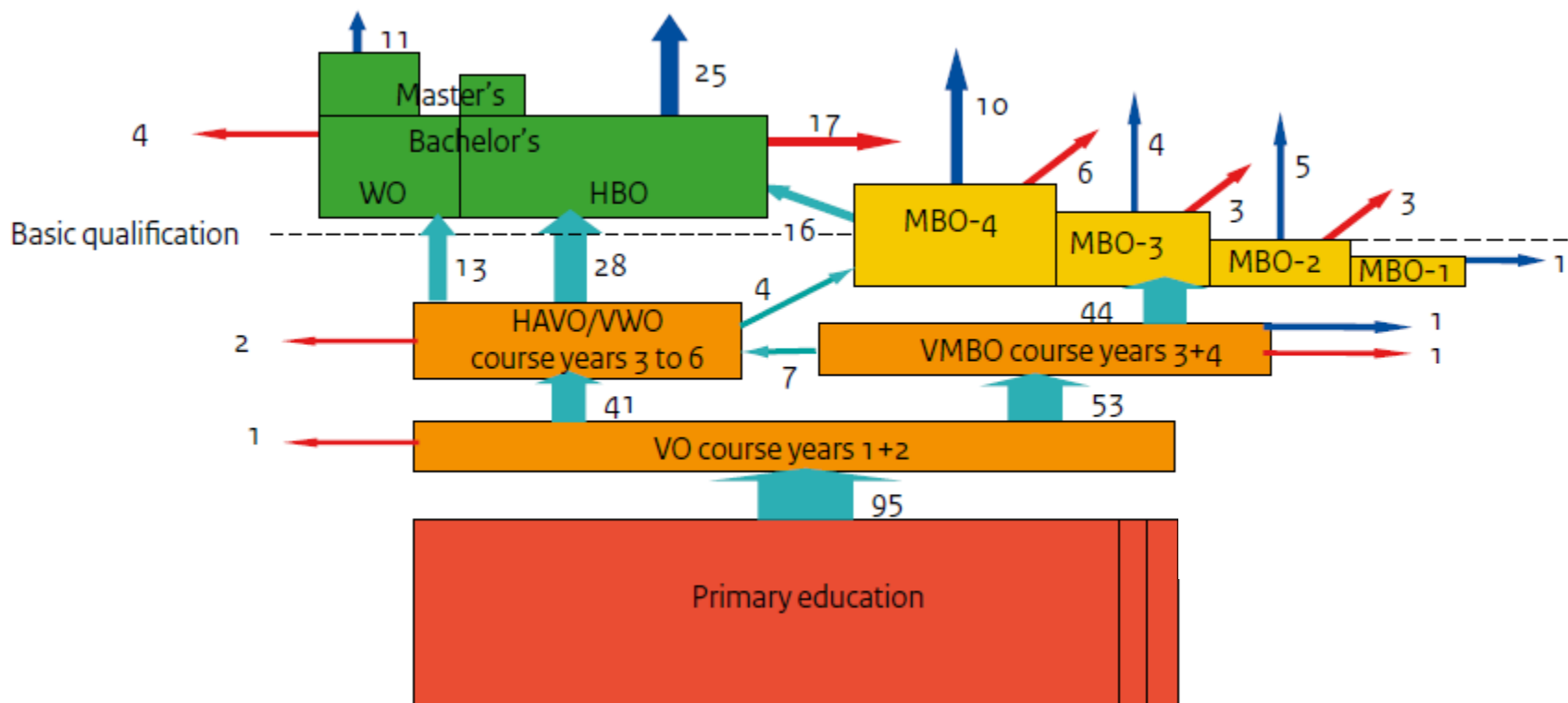


Introduction Early school leavers: objectives and key figures

- Lisbon / EU objective: reducing the number of early school-leavers between the ages of 18 and 24 from 15.5% in 2002 to under 8% in 2020
- National objective: reducing the number of early school-leavers : from 71.000 in 2002 (5,7%) to 25.000 in 2016 (under 2,0%)



Overall review of the education system





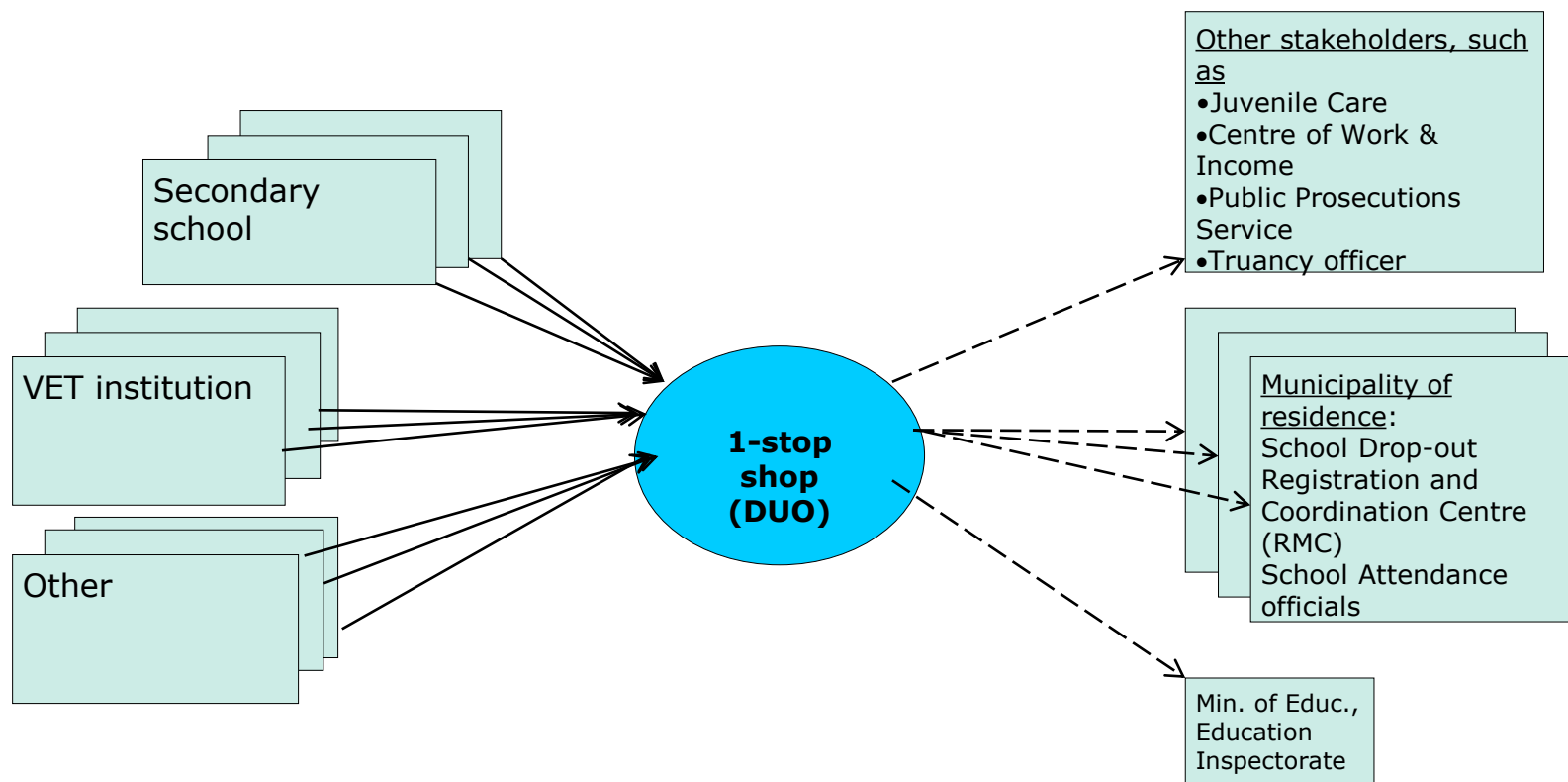
Introduction of the Education Number

Better registration, better analysis:

- Introduction of 'Education Number' (since 2005)
- Digital Absence Counter (since 2009)
- Individual data about all students including early school leavers: age, male/female, address, ethnic origin, education type, school history etc.



Introduction of the Education Number





Sharing results: information products

- Early School Leaving in the EU. Other definition.
 - Annual publication of Dutch ESL figures, twice a year (publicly available)
 - Factsheets and detailed tables for regions and institutions (publicly available)
 - Monthly reports for municipalities and schools (not publicly available)
- *Detailed information helps schools, regions and the ministry to target resources aimed at reducing ESL*



Early school leaving in EU perspective

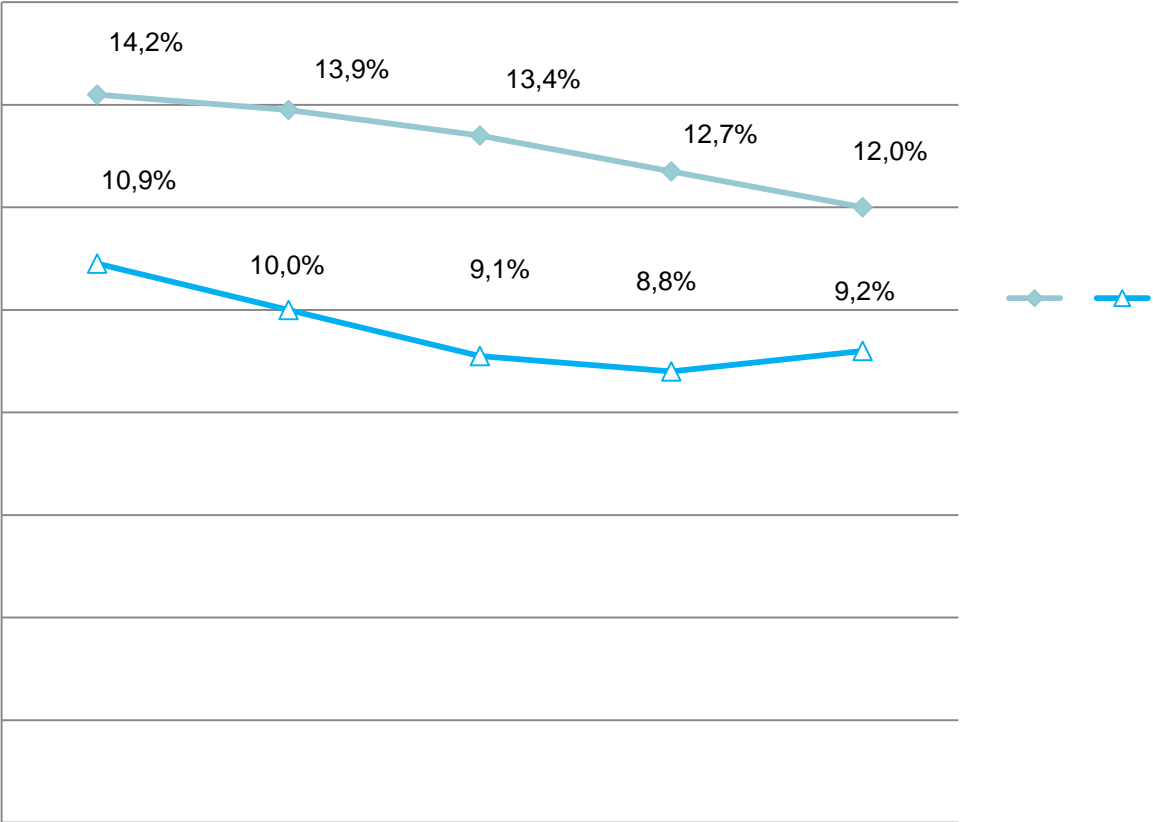
% of the population aged 18-24 with at most lower secondary education and not in further education or training

Rates 2013:

EU: 12.0%

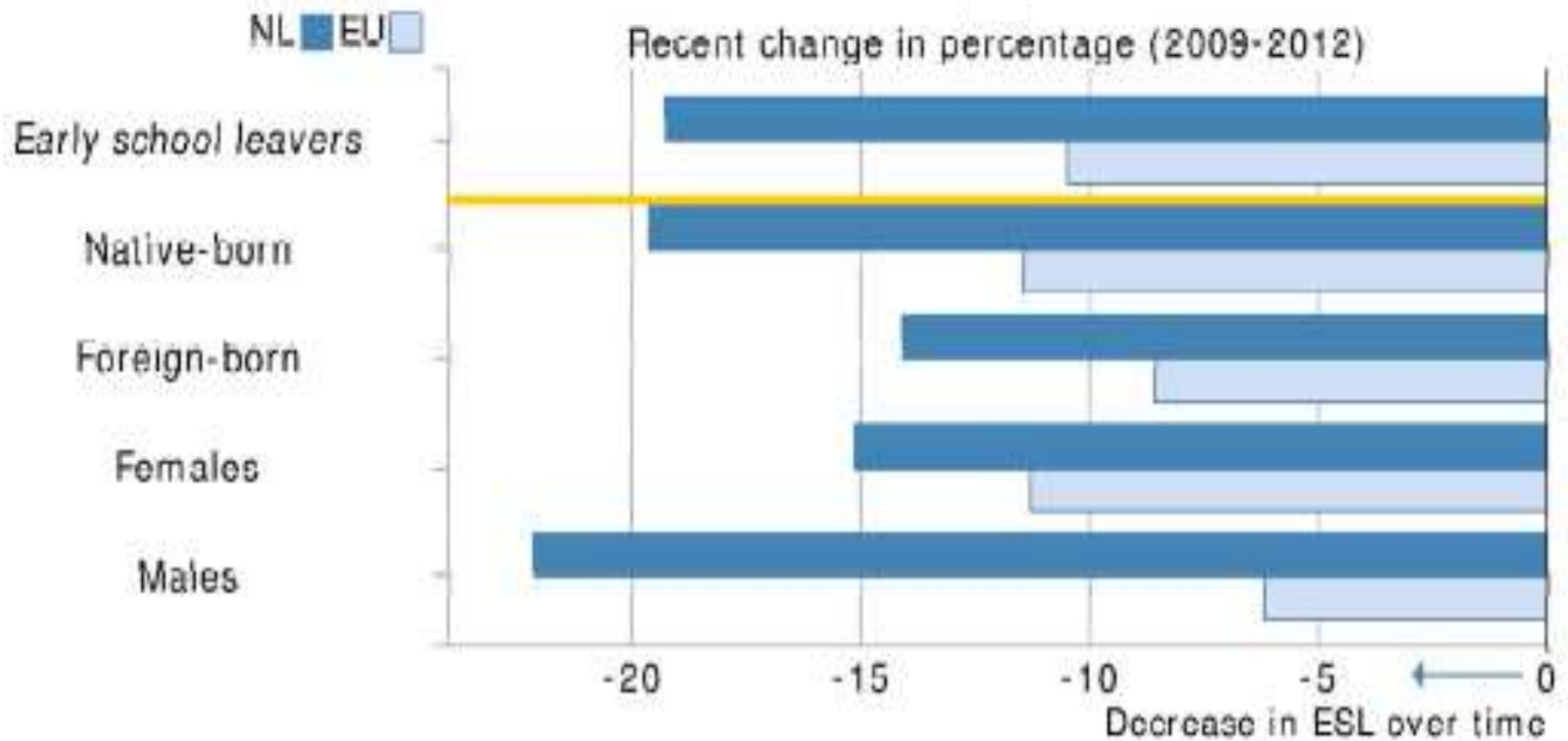
NL: 9.2 %

(source: Eurostat)





Early school leaving in EU perspective





ESL Explorer

VSV-Verkenner - Zoom in op schooluitval - Microsoft Internet Explorer provided by OCW

http://www.vsvverkenner.nl

Bestand Beveiligen Beeld Faviconen Extra Help

VSV-Verkenner - Zoom in op schooluitval

Print Tekstgrootte Terug naar Aanval op Schooluitval-website Contact

Ministerie van Onderwijs, Cultuur en Wetenschap

VSV-Verkenner Zoom in op schooluitval

Home Landelijke cijfers RMC-regio's Gemeenten Scholen Vergelijken Help zoek Uitgebreid zoeken

Schooluitvalcijfers in beeld met de VSV-Verkenner

Jongeren met een startkwalificatie op zak vergroten hun kansen op de arbeidsmarkt. Scholen, gemeenten en OCW gaan door met de 'Aanval op Schooluitval' zodat in 2012 het aantal nieuwe voortijdig schoolverlaters hooguit 35.000 bedraagt en in 2015 hooguit 25.000. We zijn op de goede weg, voor schooljaar 2009-2010 staat de teller op 39.557. Bekijk met de VSV-Verkenner de stand van zaken op landelijk niveau, per RMC-regio, gemeente of school, bekijk de resultaten van het voortgezet onderwijs en het middelbaar beroepsonderwijs, maak vergelijkingen tussen gemeenten en/of scholen en bekijk andere relevante informatie.

Start de VSV-verkenner

Ge naar www.aanvalopschooluitval.nl voor meer informatie over de 'Aanval op Schooluitval'.

Schooljaar	Doelstelling	Realisatie
2005-2006	75.000	75.000
2006-2007	65.000	65.000
2007-2008	55.000	55.000
2008-2009	45.000	45.000
2009-2010	35.000	39.557

Navigeer over de kaart om de reductie te zien van 2009-2010 t.o.v. 2005-2006.

Uitgelicht

Meest bekeken

- > RMC-regio Flevoland
- > Landelijke cijfers
- > RMC-regio Stedendriehoek

Actueel

- ⌚ Daling aantal voortijdig schoolverlaters zet door
- ⌚ Definitieve vsv-cijfers convenantjaar 2005-2009

Gereed Internet 100%



Focus on regions

Dropout Explorer

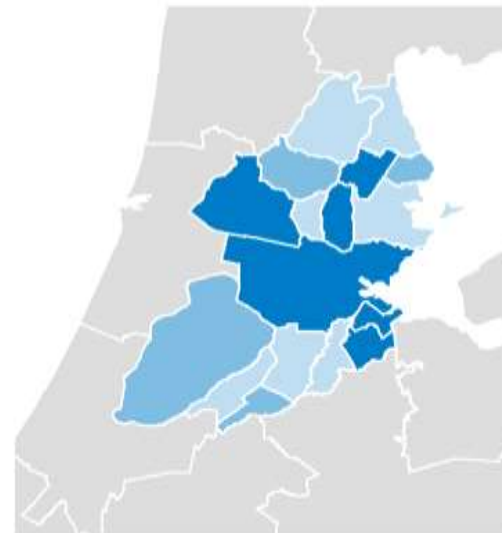
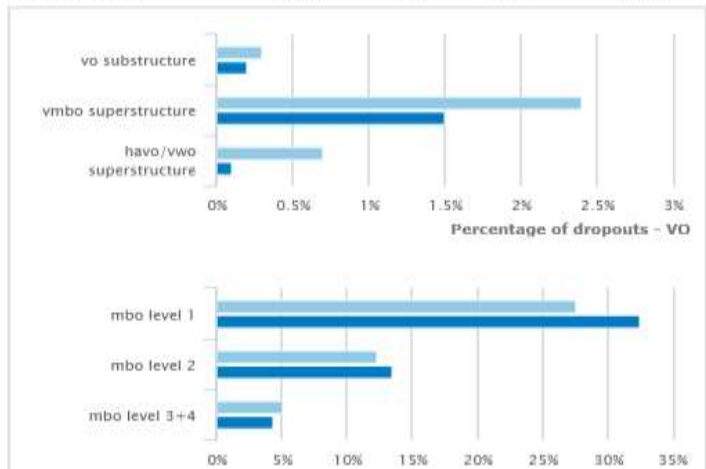
National figures **Regions** Municipalities Educational institutions

Regio 21: Agglomeratie Amsterdam

The histograms below show dropout figures in relation to the total number of pupils enrolled that are living in the Agglomeratie Amsterdam.

Total number of education participants en new dropouts

	Participants	Dropouts	% dropouts	standaard
Total	97.072	2.638	2,7%	
Total VO	70.933	617	0,9%	
<i>VO substructure</i>	37.857	124	0,3%	0,2%
<i>VMBO superstructure</i>	15.139	363	2,4%	1,5%
<i>HAVO/VWO superstructure</i>	17.937	130	0,7%	0,1%
Total MBO	26.139	2.021	7,7%	
<i>MBO level 1</i>	1.055	291	27,6%	32,5%
<i>MBO level 2</i>	6.178	757	12,3%	13,5%
<i>MBO level 3 + 4</i>	18.906	973	5,1%	4,25%



Navigate on the map to select a region.

Percentage per region

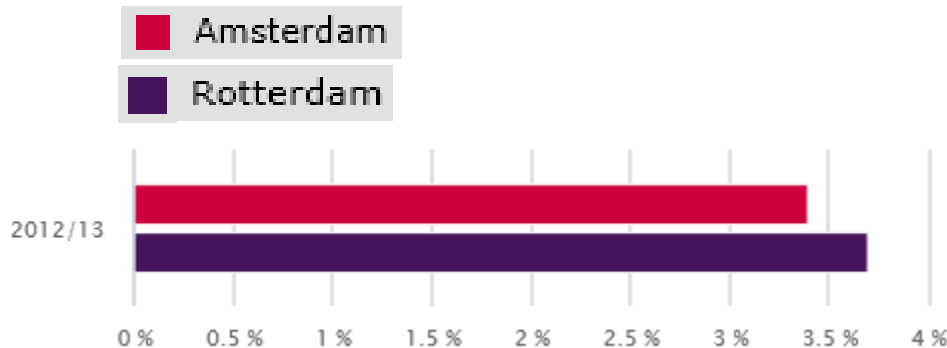
- Less than 1,7%
- 1,8 - 2,0%
- 2,1 - 2,3%
- 2,4% or more

Select a municipality

View



Focus on municipalities



Municipality: Amsterdam

The histograms below show dropout figures in relation to the total number of pupils enrolled that are living in the municipality Amsterdam.

Total number of education participants en new dropouts

	participants	dropouts	% dropouts	standard
Total	45.204	1.541	3,4%	
Total VO	32.586	356	1,1%	
<i>VO substructure</i>	17.368	74	0,4%	0,2%
<i>VMBO superstructure</i>	7.292	213	2,9%	1,5%
<i>HAVO/VWO superstructure</i>	7.926	69	0,9%	0,1%
Totaal MBO	12.618	1.185	9,4%	
<i>MBO level 1</i>	618	173	28,0%	32,5%
<i>MBO level 2</i>	3.160	471	14,9%	13,5%
<i>MBO level 3 + 4</i>	8.840	541	6,1%	4,25%

Municipality: Rotterdam

The histograms below show dropout figures in relation to the total number of pupils enrolled that are living in the municipality Rotterdam.

Total number of education participants en new dropouts

	participants	dropouts	% dropouts	standard
Total	43.208	1.620	3,7%	
Total VO	28.215	221	0,8%	
<i>VO substructure</i>	14.884	36	0,2%	0,2%
<i>VMBO superstructure</i>	7.846	144	1,8%	1,5%
<i>HAVO/VWO superstructure</i>	5.485	41	0,7%	0,1%
Totaal MBO	14.993	1.399	9,3%	
<i>MBO level 1</i>	1.074	328	30,5%	32,5%
<i>MBO level 2</i>	3.815	528	13,8%	13,5%
<i>MBO level 3 + 4</i>	10.104	543	5,4%	4,25%

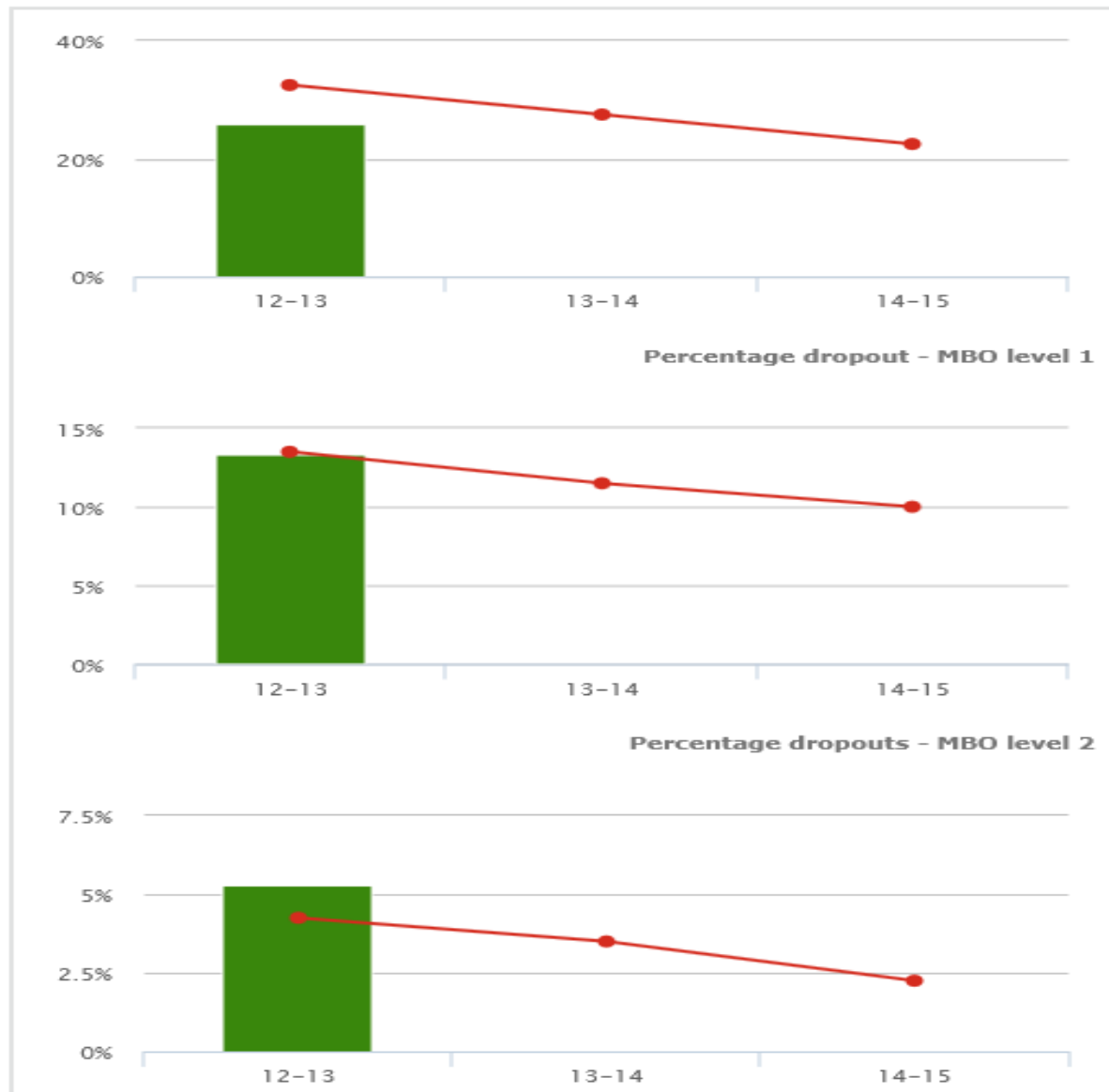
Total number of education participants en new dropouts

	participants	dropouts	% dropouts	target standard
Total	20.457	1.614	7,9%	
MBO level 1	688	179	26,0%	32,5%
MBO level 2	4.868	647	13,3%	13,5%
MBO level 3 + 4	14.901	788	5,3%	4,25%

Focus on a VET institution












ESL results

ROC van Amsterdam:





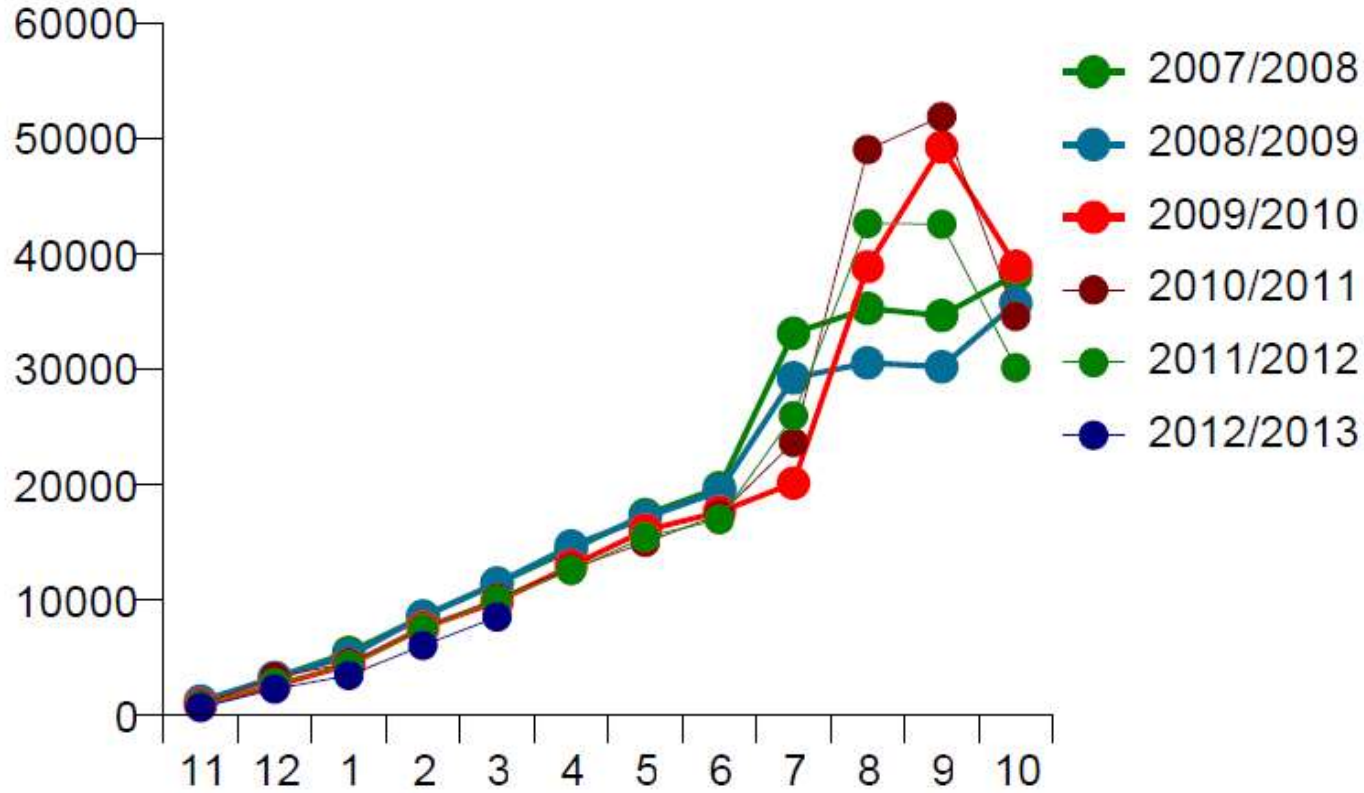
Need more background information? More info in the ESL Scanner!

 instellingsnaam	 leeftijdscategorie	 deelnemers	 vsv'ers	 vsv%	
ROC van Amsterdam	15 en jonger	2	0	,0%	
	16 en 17	2.506	79	3,2%	
	18 en 19	9.323	822	8,8%	
	20 en ouder	8.626	713	8,3%	
Zadkine	16 en 17	1.558	42	2,7%	
	18 en 19	5.817	461	7,9%	
	20 en ouder	5.595	454	8,1%	
Totaal		33.427	2.571	7,7%	

Also available: overviews per ethnicity, male/female, education type



Monthly reports e.g. "preliminary" esl's:





No one leaves this school without a diploma!





More information:

www.aanvalopschooluitval.nl

www.vsvverkenner.nl/english